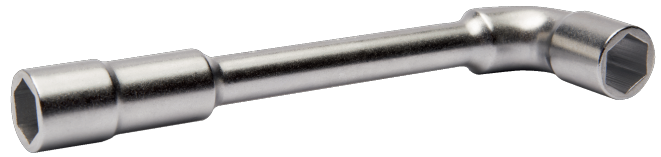




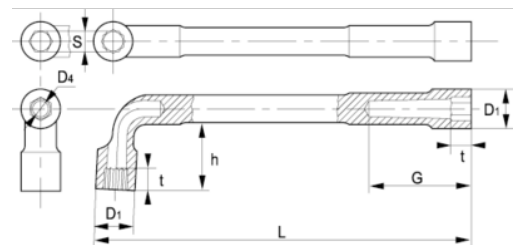
52-06-1/52-32-1

Llaves de tubo en L 6 × 6




DETALLES DEL PRODUCTO

- Llave de tubo de dos bocas en L en dimensiones métricas
- Las llaves tienen dos bocas hexagonales.
- Acabado: cromado mate.
- Material: aleación de acero de alto rendimiento.
- Dureza: 42-50 HRC.
- Normas: ISO 1711, ISO 691 e ISO 2236.
- -1 blíster.



ATRIBUTOS DE PRODUCTO

Producto	S	D1	D4	G	h	t	L	
52-06-1	6 mm	10 mm	4.5 mm	21 mm	17 mm	6 mm	102 mm	30 g
52-07-1	7 mm	11 mm	4.5 mm	22 mm	17.5 mm	7 mm	106 mm	40 g
52-08-1	8 mm	12.5 mm	7 mm	25 mm	19.5 mm	8 mm	114 mm	60 g
52-09-1	9 mm	13.5 mm	7 mm	26 mm	20 mm	9 mm	122 mm	70 g
52-10-1	10 mm	15 mm	8 mm	28 mm	24 mm	10 mm	129 mm	90 g
52-11-1	11 mm	16.5 mm	8 mm	30 mm	26.5 mm	11 mm	136 mm	120 g
52-12-1	12 mm	18 mm	9 mm	36 mm	28 mm	11 mm	144 mm	150 g
52-13-1	13 mm	19.5 mm	9 mm	38.6 mm	30 mm	12 mm	152 mm	160 g
52-14-1	14 mm	21 mm	10.5 mm	40 mm	31.5 mm	13 mm	160 mm	190 g
52-15-1	15 mm	22.5 mm	10.5 mm	42 mm	34 mm	14 mm	169 mm	200 g
52-16-1	16 mm	24 mm	13 mm	46 mm	37 mm	16 mm	178 mm	280 g
52-17-1	17 mm	25.5 mm	13 mm	48 mm	39 mm	17 mm	187 mm	300 g
52-18-1	18 mm	26.5 mm	13 mm	50 mm	40 mm	18 mm	195 mm	310 g
52-19-1	19 mm	28.5 mm	15 mm	51 mm	41 mm	19 mm	204 mm	420 g
52-20-1	20 mm	29.5 mm	15 mm	53 mm	43 mm	20 mm	212 mm	450 g
52-21-1	21 mm	30.5 mm	15 mm	55 mm	46 mm	21 mm	221 mm	470 g
52-22-1	22 mm	32 mm	15 mm	57 mm	48 mm	22 mm	230 mm	530 g
52-23-1	23 mm	33.5 mm	18 mm	64 mm	50.5 mm	23 mm	240 mm	650 g
52-24-1	24 mm	34.5 mm	18 mm	67 mm	54 mm	24 mm	250 mm	630 g
52-25-1	25 mm	36 mm	20 mm	69 mm	56 mm	25 mm	260 mm	830 g
52-26-1	26 mm	37 mm	20 mm	70 mm	58.5 mm	26 mm	270 mm	860 g
52-27-1	27 mm	38 mm	22 mm	73 mm	58 mm	27 mm	280 mm	990 g
52-28-1	28 mm	39.5 mm	22 mm	75 mm	60 mm	28 mm	290 mm	1060 g
52-29-1	29 mm	41 mm	22 mm	76 mm	62 mm	29 mm	300 mm	1080 g
52-30-1	30 mm	42 mm	24 mm	83 mm	64 mm	30 mm	310 mm	1220 g
52-32-1	32 mm	44.5 mm	24 mm	88 mm	70 mm	31 mm	330 mm	1380 g