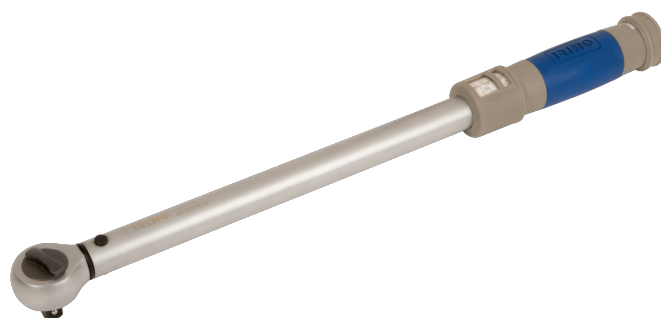




070421



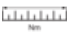


**Einstellbarer Drehmomentschlüssel
3/8" mit fixiertem Knarrenkopf
10-60 Nm**



PRODUKTDDETAILS

- Präzision: $\pm 4\%$ im Uhrzeigersinn
- Mit festem Knarrenkopf
- Umschaltknarre mit 45 Zähnen/ 8° Rückschwenkwinkel
- Kunststoffgriff für hohen Komfort
- Norm: ISO6789:2003

PRODUKTEIGENSCHAFTEN

Produkt					
070421	3/8"	360 mm	10-60 N·m	125 N·m	0.8 kg