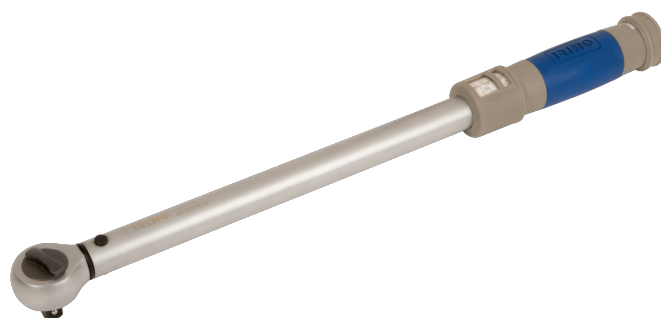




070441


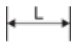



**Einstellbarer Drehmomentschlüssel
1/2" mit fixiertem Knarrenkopf
40-200 Nm**



PRODUKTDDETAILS

- Präzision: $\pm 4\%$ im Uhrzeigersinn
- Mit festem Knarrenkopf
- Umschaltknarre mit 45 Zähnen/ 8° Rückschwenkwinkel
- Kunststoffgriff für hohen Komfort
- Norm: ISO6789:2003

PRODUKTEIGENSCHAFTEN

Produkt					
070441	1/2"	460 mm	40-200 N·m	0.5 N·m	1.0 kg