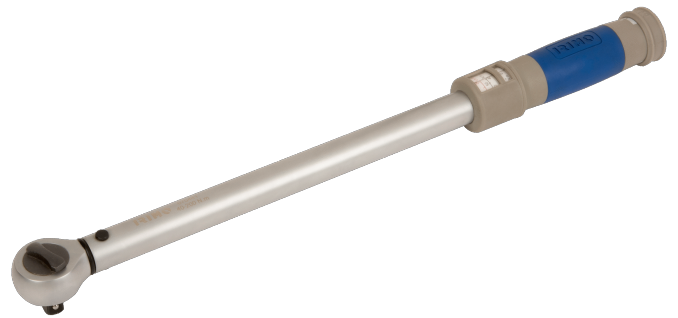




070461


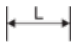



**Einstellbarer Drehmomentschlüssel
3/4" mit fixiertem Knarrenkopf
65-335 Nm**



PRODUKTDDETAILS

- Präzision: $\pm 4\%$ im Uhrzeigersinn
- Mit festem Knarrenkopf
- Umschaltknarre mit 45 Zähnen/ 8° Rückschwenkwinkel
- Kunststoffgriff für hohen Komfort
- Norm: ISO6789:2003

PRODUKTEIGENSCHAFTEN

Produkt					
070461	3/4"	520 mm	65-335 N·m	0.5 N·m	1.2 kg