



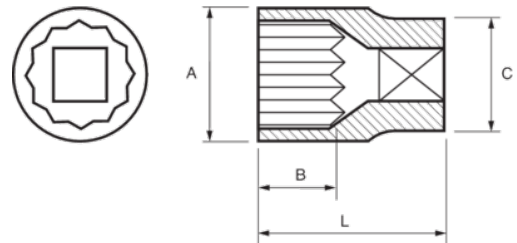
122A-10-1/122A-40-1

1/2" Steckschlüssel-Einsätze,
Doppelsechskant, Zoll





PRODUKTDDETAILS

- 1/2" Steckschlüssel-Einsätze, Doppelsechskant, Zoll
- Chrom-Vanadium-Stahllegierung
- Verchromt, hochglanzpoliert
- Wellenförmiges Spezialprofil Sechskant NPP
- Geprüft nach: DIN3120, DIN3124



PRODUKTEIGENSCHAFTEN

Produkt		A	B	C	L	
122A-10-1	5/16 in	14.8 mm	13 mm	22 mm	38 mm	50 g
122A-11-1	11/32 in	15.3 mm	13 mm	22 mm	38 mm	48 g
122A-12-1	3/8 in	15.5 mm	13 mm	22 mm	38 mm	45 g
122A-14-1	7/16 in	16.7 mm	13 mm	22 mm	38 mm	49 g
122A-16-1	1/2 in	19.2 mm	13 mm	22 mm	38 mm	54 g
122A-18-1	9/16 in	20.5 mm	13 mm	22 mm	38 mm	55 g
122A-20-1	5/8 in	22 mm	17.8 mm	20.6 mm	38 mm	69 g
122A-22-1	11/16 in	24 mm	17.8 mm	21.9 mm	38 mm	71 g
122A-24-1	3/4 in	26 mm	17.8 mm	22.9 mm	38 mm	75 g
122A-26-1	13/16 in	28 mm	17.8 mm	23.9 mm	38 mm	76 g
122A-28-1	7/8 in	30 mm	17.8 mm	26.1 mm	38 mm	88 g
122A-30-1	15/16 in	32 mm	17.8 mm	28.1 mm	38 mm	104 g
122A-34-1	1.1/16 in	36 mm	17.8 mm	30.1 mm	42 mm	141 g
122A-38-1	1.3/16 in	40 mm	17.8 mm	34.1 mm	44 mm	214 g
122A-40-1	1.1/4 in	42 mm	17.8 mm	36.1 mm	44 mm	233 g