



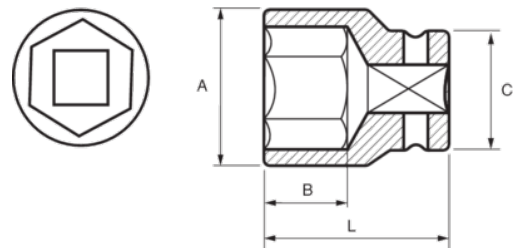
131-19-1/131-60-1

3/4"-Sechskant-Steckschlüssel-Einsätze,  
metrisch





## PRODUKTDDETAILS

- 3/4" Sechskant-Einsätze, metrisch
- Chrom-Vanadium-Stahllegierung
- Verchromt, hochglanzpoliert
- Wellenförmiges Spezialprofil Sechskant NPP
- Geprüft nach: DIN3120, DIN3124



PRODUKTEIGENSCHAFTEN

Produkt		<b>A</b>	<b>B</b>	<b>C</b>	<b>L</b>	
<b>131-19-1</b>	19 mm	30 mm	12 mm	36 mm	50 mm	200 g
<b>131-21-1</b>		32 mm	12 mm	36 mm	50 mm	215 g
<b>131-22-1</b>	22 mm	33 mm	12 mm	36 mm	50 mm	215 g
<b>131-23-1</b>	23 mm	34 mm	14 mm	36 mm	50 mm	215 g
<b>131-24-1</b>	24 mm	34 mm	16 mm	36 mm	50 mm	215 g
<b>131-25-1</b>	25 mm	38 mm	16 mm	36 mm	50 mm	220 g
<b>131-26-1</b>	26 mm	38 mm	16 mm	36 mm	52 mm	220 g
<b>131-27-1</b>	27 mm	38 mm	18 mm	36 mm	52 mm	240 g
<b>131-28-1</b>	28 mm	38 mm	18 mm	36 mm	52 mm	250 g
<b>131-29-1</b>	29 mm	42 mm	18 mm	38 mm	52 mm	260 g
<b>131-30-1</b>	30 mm	42 mm	20 mm	38 mm	52 mm	275 g
<b>131-32-1</b>	32 mm	44 mm	22 mm	38 mm	52 mm	310 g
<b>131-33-1</b>	33 mm	46 mm	22 mm	38 mm	55 mm	340 g
<b>131-34-1</b>	34 mm	46 mm	22 mm	38 mm	57 mm	330 g
<b>131-35-1</b>	35 mm	48 mm	24 mm	42 mm	57 mm	380 g
<b>131-36-1</b>	36 mm	50 mm	24 mm	42 mm	57 mm	415 g
<b>131-38-1</b>	38 mm	52 mm	26 mm	44 mm	57 mm	455 g
<b>131-40-1</b>	40 mm	56 mm	27 mm	44 mm	63 mm	505 g
<b>131-41-1</b>		56 mm	27 mm	44 mm	63 mm	545 g
<b>131-42-1</b>		58 mm	27 mm	44 mm	63 mm	600 g
<b>131-46-1</b>		62 mm	30 mm	44 mm	68 mm	650 g
<b>131-50-1</b>		68 mm	33 mm	44 mm	72 mm	755 g
<b>131-55-1</b>		75 mm	36 mm	48 mm	75 mm	1000 g
<b>131-60-1</b>		80 mm	39 mm	48 mm	77 mm	1100 g