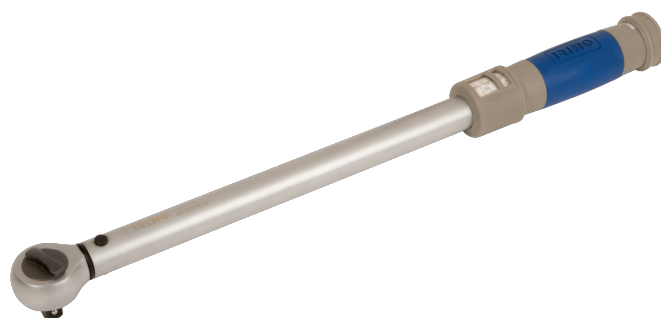




070411



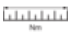


Llave dinamométrica de disparo ajustable de 1/4" con cabeza fija de carraca, 4-20 Nm



### DETALLES DEL PRODUCTO

- Precisión:  $\pm 4\%$  en sentido horario.
- Cabeza fija de carraca.
- Carraca reversible con 45 dientes / ángulo de acción de  $8^\circ$ .
- Mango de plástico para mayor comodidad.
- Norma: ISO 6789:2003.

### ATRIBUTOS DE PRODUCTO

Producto					
070411	1/4"	275 mm	4-20 N·m	0.05 N·m	0.5 kg