

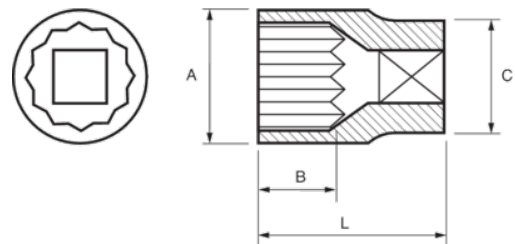


122-10-1
Douille 1/2" 12 pans 10 mm





DÉTAILS SUR LE PRODUIT

- 1/2" Sockets, Bi-hex, sizes in mm
- Chrome vanadium alloy steel
- Chrome-plated bright finish
- Wave shape profile NPP
- Standards: DIN3120, DIN3124



ATTRIBUTS DU PRODUIT

Produit		A	B	C	L	
122-10-1	10 mm	15.3 mm	13 mm	22 mm	38 mm	49 g