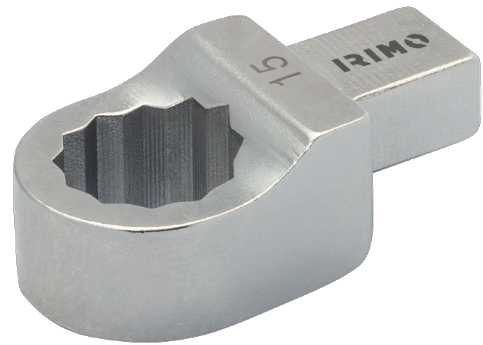




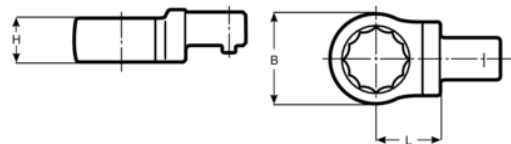
7314-2-24

Embout polygonal 14x18 24 mm  
pour clé dynamométrique





#### DÉTAILS SUR LE PRODUIT

- Embouts polygonaux, 14x18 mm
- Alliage d'acier hautes performances
- Chromés et forgés



#### ATTRIBUTS DU PRODUIT

Produit		<b>H</b>	<b>B</b>	<b>L</b>	
7314-2-24	24 mm	15 mm	38 mm	25 mm	145 g