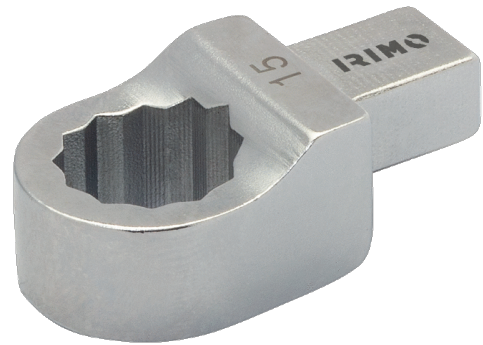




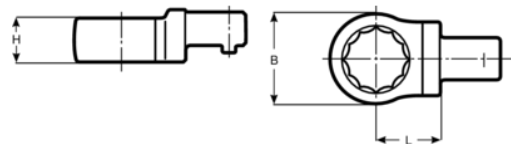
7314-2-36

Embout polygonal 14x18 361 mm
pour clé dynamométrique





DÉTAILS SUR LE PRODUIT

- Embouts polygonaux, 14x18 mm
- Alliage d'acier hautes performances
- Chromés et forgés



ATTRIBUTS DU PRODUIT

Produit		H	B	L	
7314-2-36	36 mm	19 mm	53 mm	31 mm	205 g