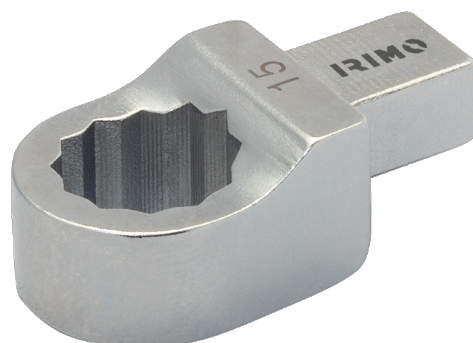


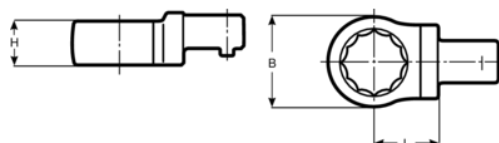


7309-2-10/7309-2-22
Embouts polygonaux 9x12





DÉTAILS SUR LE PRODUIT

- Embouts polygonaux, 9x12 mm
- Alliage d'acier hautes performances
- Chromés et forgés



ATTRIBUTS DU PRODUIT

Produit		L	H	B	
7309-2-10	10 mm	17.5 mm	8 mm	18 mm	40 g
7309-2-11	11 mm	17.5 mm	8 mm	19 mm	40 g
7309-2-12	12 mm	17.5 mm	12 mm	20 mm	50 g
7309-2-13	13 mm	17.5 mm	12 mm	21 mm	50 g
7309-2-14	14 mm	17.5 mm	12 mm	23 mm	50 g
7309-2-17	17 mm	175 mm	13 mm	27 mm	50 g
7309-2-19	19 mm	17.5 mm	13 mm	31 mm	60 g
7309-2-22	22 mm	17.5 mm	15 mm	35 mm	80 g