

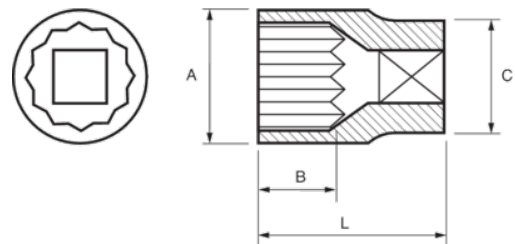


122-16-1
Socket 1/2" Bi-hex 16 mm





PRODUCT DETAILS

- 1/2" sockets, bi-hex, metric sizes
- Chrome vanadium alloy steel
- Chrome plated bright finish
- Wave shape profile NPP
- Standards: DIN 3120, DIN 3124



PRODUCT ATTRIBUTES

Product		A	B	C	L	
122-16-1	16 mm	22 mm	17.8 mm	20.5 mm	38 mm	71 g