

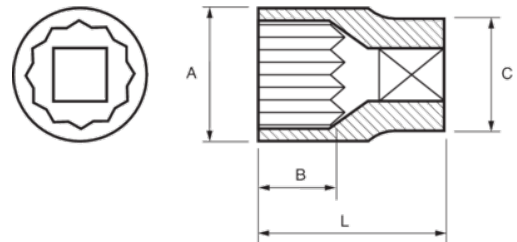


122-18-1
Socket 1/2" Bi-hex 18 mm





PRODUCT DETAILS

- 1/2" sockets, bi-hex, metric sizes
- Chrome vanadium alloy steel
- Chrome plated bright finish
- Wave shape profile NPP
- Standards: DIN 3120, DIN 3124



PRODUCT ATTRIBUTES

Product		A	B	C	L	
122-18-1	18 mm	25 mm	17.8 mm	22.9 mm	38 mm	90 g