

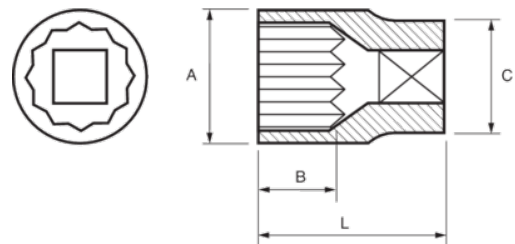


122-19-1
Socket 1/2" Bi-hex 19 mm





PRODUCT DETAILS

- 1/2" sockets, bi-hex, metric sizes
- Chrome vanadium alloy steel
- Chrome plated bright finish
- Wave shape profile NPP
- Standards: DIN 3120, DIN 3124



PRODUCT ATTRIBUTES

Product		A	B	C	L	
122-19-1	19 mm	26 mm	17.8 mm	22.9 mm	38 mm	84 g