



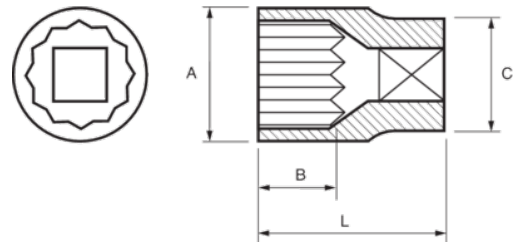
122A-20-1

Socket 1/2" Bi-hex 5/8"





PRODUCT DETAILS

- 1/2" sockets, bi-hex, inch sizes
- Chrome vanadium alloy steel
- Chrome plated bright finish
- Wave shape profile NPP
- Standards: DIN 3120, DIN 3124



PRODUCT ATTRIBUTES

Product		A	B	C	L	
122A-20-1	5/8 in	22 mm	17.8 mm	20.6 mm	38 mm	69 g