



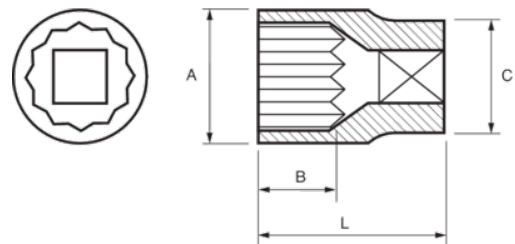
122A-22-1

Socket 1/2" Bi-hex 11/16"





PRODUCT DETAILS

- 1/2" sockets, bi-hex, inch sizes
- Chrome vanadium alloy steel
- Chrome plated bright finish
- Wave shape profile NPP
- Standards: DIN 3120, DIN 3124



PRODUCT ATTRIBUTES

Product		A	B	C	L	
122A-22-1	11/16 in	24 mm	17.8 mm	21.9 mm	38 mm	71 g