



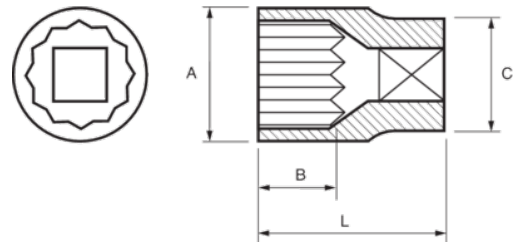
122A-24-1

Socket 1/2" Bi-hex 3/4"





PRODUCT DETAILS

- 1/2" sockets, bi-hex, inch sizes
- Chrome vanadium alloy steel
- Chrome plated bright finish
- Wave shape profile NPP
- Standards: DIN 3120, DIN 3124



PRODUCT ATTRIBUTES

Product		A	B	C	L	
122A-24-1	3/4 in	26 mm	17.8 mm	22.9 mm	38 mm	75 g