



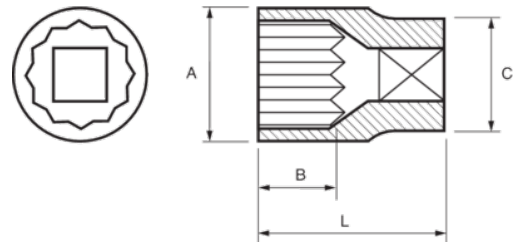
122A-26-1

Socket 1/2" Bi-hex 13/16"





## PRODUCT DETAILS

- 1/2" sockets, bi-hex, inch sizes
- Chrome vanadium alloy steel
- Chrome plated bright finish
- Wave shape profile NPP
- Standards: DIN 3120, DIN 3124



PRODUCT ATTRIBUTES

Product		<b>A</b>	<b>B</b>	<b>C</b>	<b>L</b>	
<b>122A-26-1</b>	13/16 in	28 mm	17.8 mm	23.9 mm	38 mm	76 g