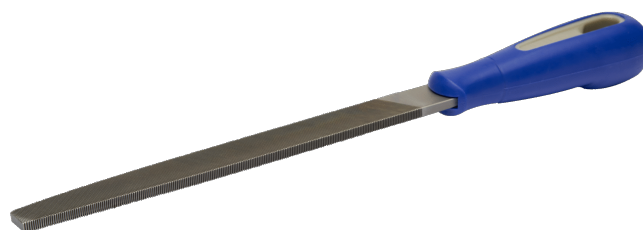




534551

Flat File 12" Bastard Cut Tapered Edges

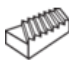
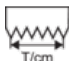
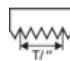



PRODUCT DETAILS

- For working high-alloy tool steels
- Conical tip, parallel surfaces for better access in angles and corners
- Comfortable two-component handle for excellent grip
- Surfaces double cut, edges single cut
- Type of cut: 1 = bastard, 2 = double
- Packaged with a hanging clip



PRODUCT ATTRIBUTES

Product	A	B	C				
534551	300 mm	30 mm	6 mm	1	7	18	430 g