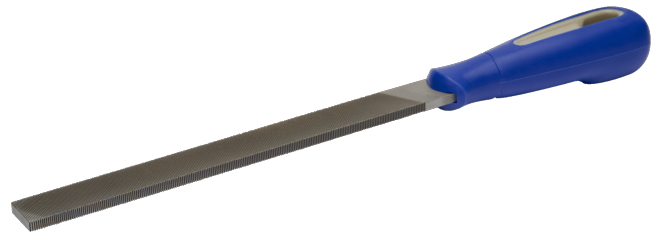




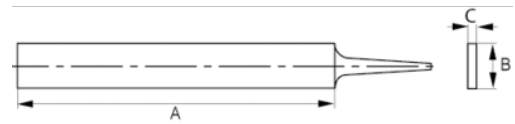
534571

Flat File 8" Bastard Parallel Edges

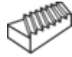
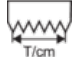




PRODUCT DETAILS

- For working high-alloy tool steels
- Edges and surfaces parallel
- Comfortable two-component handle for excellent grip
- Surface double cut, one edge uncut and one edge single cut
- Type of cut: 1 = bastard, 2 = double



PRODUCT ATTRIBUTES

Product	A	B	C				
534571	200 mm	20 mm	5 mm	1	10	25	200 g