



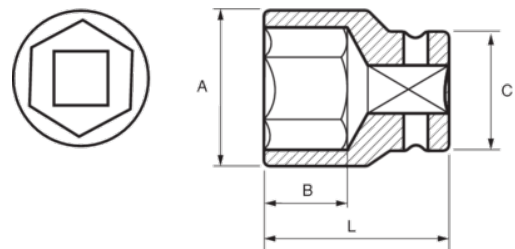
160-10-1

Impact Socket 3/8" Hex 10 mm



PRODUCT DETAILS

- 3/8" impact sockets, metric sizes
- High performance Cr-Mo alloy steel
- Phosphate finish
- To be used with machines
- To be used with retaining ring
- Dynamic-Drive profile to protect nuts
- Standards: UNE 16507, DIN 3129, ISO 2725



PRODUCT ATTRIBUTES

Product		A	B	C	L	
160-10-1	10 mm	15.8 mm	13 mm	19 mm	32 mm	40 g