



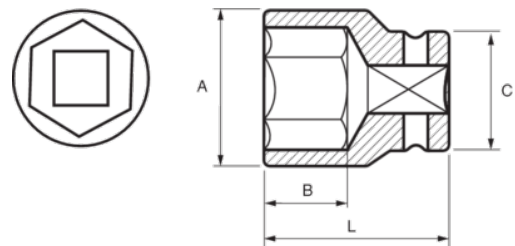
160-11-1

Impact Socket 3/8" Hex 11 mm



PRODUCT DETAILS

- 3/8" impact sockets, metric sizes
- High performance Cr-Mo alloy steel
- Phosphate finish
- To be used with machines
- To be used with retaining ring
- Dynamic-Drive profile to protect nuts
- Standards: UNE 16507, DIN 3129, ISO 2725



PRODUCT ATTRIBUTES

Product		A	B	C	L	
160-11-1	11 mm	16.9 mm	13 mm	19 mm	32 mm	41 g