



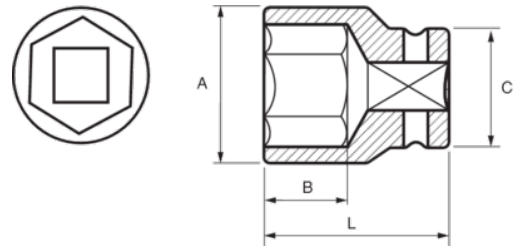
160-13-1

Impact Socket 3/8" Hex 13 mm




## PRODUCT DETAILS

- 3/8" impact sockets, metric sizes
- High performance Cr-Mo alloy steel
- Phosphate finish
- To be used with machines
- To be used with retaining ring
- Dynamic-Drive profile to protect nuts
- Standards: UNE 16507, DIN 3129, ISO 2725



PRODUCT ATTRIBUTES

Product		<b>A</b>	<b>B</b>	<b>C</b>	<b>L</b>	
<b>160-13-1</b>	13 mm	19.5 mm	13 mm	22 mm	32 mm	54 g