



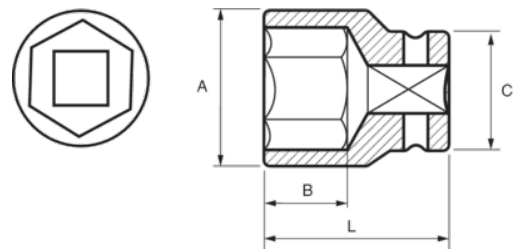
160-24-1

Impact Socket 3/8" Hex 24 mm





PRODUCT DETAILS

- 3/8" impact sockets, metric sizes
- High performance Cr-Mo alloy steel
- Phosphate finish
- To be used with machines
- To be used with retaining ring
- Dynamic-Drive profile to protect nuts
- Standards: UNE 16507, DIN 3129, ISO 2725



PRODUCT ATTRIBUTES

Product		A	B	C	L	
160-24-1	24 mm	34 mm	17 mm	22 mm	34 mm	102 g