



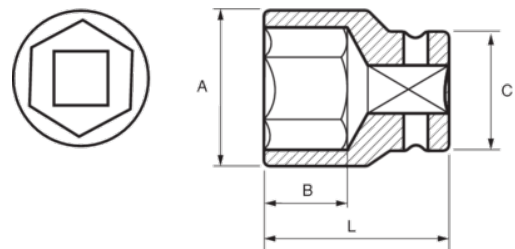
167-10-1

Impact Socket 1/2" Hex 10 mm





PRODUCT DETAILS

- 1/2" impact sockets
- High performance Cr-Mo alloy steel
- Phosphate finish
- To be used with machines
- To be used with retaining ring
- Dynamic-Drive profile to protect nuts
- Standards: UNE 16507, DIN 3129, ISO 2725



PRODUCT ATTRIBUTES

| Product |  | A | B | C | L |  |
|-----------------|---|----------|----------|----------|----------|---|
| 167-10-1 | 10 mm | 17.5 mm | 15 mm | 25 mm | 38 mm | 89 g |