



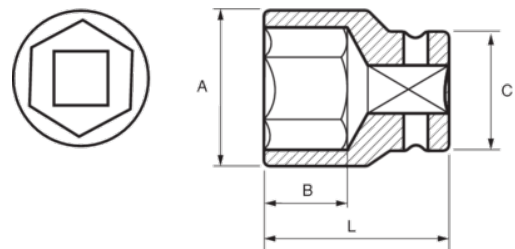
167-26-1

Impact Socket 1/2" Hex 26 mm





PRODUCT DETAILS

- 1/2" impact sockets
- High performance Cr-Mo alloy steel
- Phosphate finish
- To be used with machines
- To be used with retaining ring
- Dynamic-Drive profile to protect nuts
- Standards: UNE 16507, DIN 3129, ISO 2725



PRODUCT ATTRIBUTES

Product		A	B	C	L	
167-26-1	26 mm	36 mm	22 mm	30 mm	42 mm	189 g