



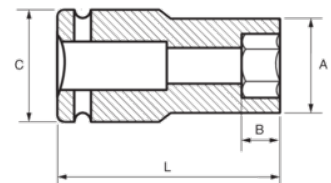
168-17-1

Impact Socket 1/2" Deep Hex 17 mm





## PRODUCT DETAILS

- 1/2" impact sockets, long series
- High performance Cr-Mo alloy steel
- Phosphate finish
- To be used with machines
- To be used with retaining ring
- Dynamic-Drive profile to protect nuts
- Standards: UNE 16507, DIN 3129, ISO 2725



## PRODUCT ATTRIBUTES

Product		<b>A</b>	<b>B</b>	<b>C</b>	<b>L</b>	
<b>168-17-1</b>	17 mm	26 mm	37 mm	30 mm	78 mm	239 g