



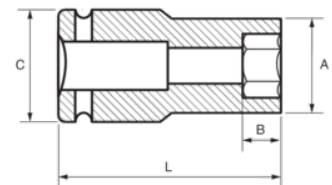
168-24-1

Impact Socket 1/2" Deep Hex 24 mm





## PRODUCT DETAILS

- 1/2" impact sockets, long series
- High performance Cr-Mo alloy steel
- Phosphate finish
- To be used with machines
- To be used with retaining ring
- Dynamic-Drive profile to protect nuts
- Standards: UNE 16507, DIN 3129, ISO 2725



PRODUCT ATTRIBUTES

| Product         |  | <b>A</b> | <b>B</b> | <b>C</b> | <b>L</b> |  |
|-----------------|---|----------|----------|----------|----------|---|
| <b>168-24-1</b> | 24 mm   | 34 mm    | 39 mm    | 30 mm    | 78 mm    | 351 g   |