



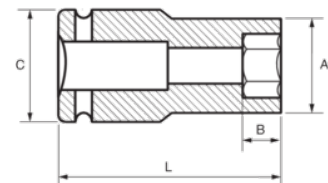
168-27-1

Impact Socket 1/2" Deep Hex 27 mm





PRODUCT DETAILS

- 1/2" impact sockets, long series
- High performance Cr-Mo alloy steel
- Phosphate finish
- To be used with machines
- To be used with retaining ring
- Dynamic-Drive profile to protect nuts
- Standards: UNE 16507, DIN 3129, ISO 2725



PRODUCT ATTRIBUTES

Product		A	B	C	L	
168-27-1	27 mm	38 mm	39 mm	30 mm	78 mm	373 g