

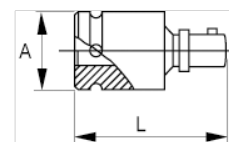


169-25-1
1/2" Impact Universal Joint



PRODUCT DETAILS

- 1/2" impact extension
- High performance Cr-Mo alloy steel
- Phosphate finish
- To be used with machines
- To be used with retaining ring
- Standards: UNE 16507, DIN 3129, ISO 2725



PRODUCT ATTRIBUTES

Product	A	L	
169-25-1	30 mm	63 mm	189 g