



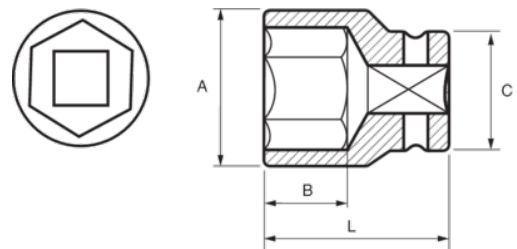
173-28-2

Impact Socket 3/4" Hex 28 mm





PRODUCT DETAILS

- 3/4" impact sockets, metric sizes
- High performance Cr-Mo alloy steel
- Phosphate finish
- To be used with machines
- To be used with retaining ring
- Dynamic-Drive profile to protect nuts
- Standards: UNE 16507, DIN 3129, ISO 2725



PRODUCT ATTRIBUTES

Product		A	B	C	L	
173-28-2	28 mm	42 mm	23 mm	44 mm	51 mm	409 g