



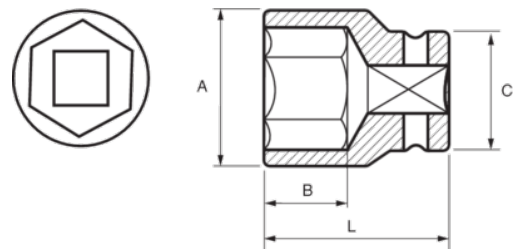
173-30-2

Impact Socket 3/4" Hex 30 mm





PRODUCT DETAILS

- 3/4" impact sockets, metric sizes
- High performance Cr-Mo alloy steel
- Phosphate finish
- To be used with machines
- To be used with retaining ring
- Dynamic-Drive profile to protect nuts
- Standards: UNE 16507, DIN 3129, ISO 2725



PRODUCT ATTRIBUTES

| Product |  | A | B | C | L |  |
|-----------------|---|----------|----------|----------|----------|---|
| 173-30-2 | 30 mm | 46 mm | 23 mm | 44 mm | 51 mm | 439 g |