



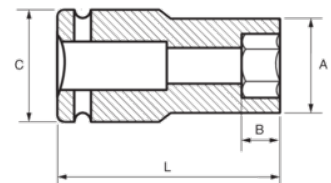
174-22-2

Impact Socket 3/4" Deep Hex 22 mm





PRODUCT DETAILS

- 3/4" impact sockets, long series
- High performance Cr-Mo alloy steel
- Phosphate finish
- To be used with machines
- To be used with retaining ring
- Dynamic-Drive profile to protect nuts
- Standards: UNE 16507, DIN 3129, ISO 2725



PRODUCT ATTRIBUTES

Product		A	B	C	L	
174-22-2	22 mm	36 mm	23 mm	44 mm	90 mm	700 g