



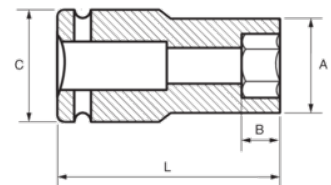
174-32-2

Impact Socket 3/4" Deep Hex 32 mm





## PRODUCT DETAILS

- 3/4" impact sockets, long series
- High performance Cr-Mo alloy steel
- Phosphate finish
- To be used with machines
- To be used with retaining ring
- Dynamic-Drive profile to protect nuts
- Standards: UNE 16507, DIN 3129, ISO 2725



PRODUCT ATTRIBUTES

Product		<b>A</b>	<b>B</b>	<b>C</b>	<b>L</b>	
<b>174-32-2</b>	32 mm	48 mm	27 mm	44 mm	90 mm	957 g