



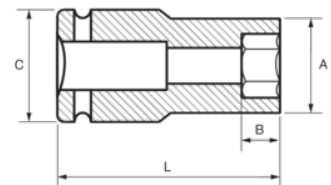
174-36-2

Impact Socket 3/4" Deep Hex 36 mm





PRODUCT DETAILS

- 3/4" impact sockets, long series
- High performance Cr-Mo alloy steel
- Phosphate finish
- To be used with machines
- To be used with retaining ring
- Dynamic-Drive profile to protect nuts
- Standards: UNE 16507, DIN 3129, ISO 2725



PRODUCT ATTRIBUTES

Product		A	B	C	L	
174-36-2	36 mm	55 mm	27 mm	44 mm	90 mm	1084 g