



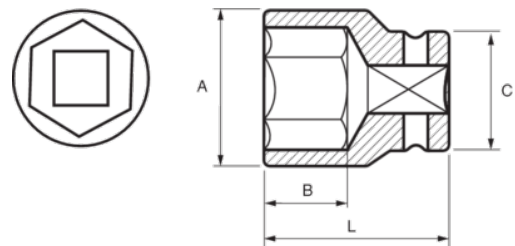
177-24-2

Impact Socket 1" Hex 24 mm




PRODUCT DETAILS

- 1" impact sockets
- High performance Cr-Mo alloy steel
- Phosphate finish
- To be used with machines
- To be used with retaining ring
- Dynamic-Drive profile to protect nuts
- Standards: UNE 16507, DIN 3129, ISO 2725



PRODUCT ATTRIBUTES

Product		A	B	C	L	
177-24-2	24 mm	41 mm	22 mm	54 mm	58 mm	650 g