



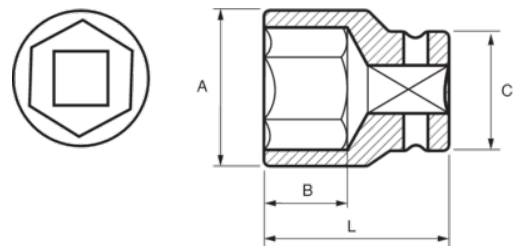
177-65-2

Impact Socket 1" Hex 65 mm





## PRODUCT DETAILS

- 1" impact sockets
- High performance Cr-Mo alloy steel
- Phosphate finish
- To be used with machines
- To be used with retaining ring
- Dynamic-Drive profile to protect nuts
- Standards: UNE 16507, DIN 3129, ISO 2725



PRODUCT ATTRIBUTES

Product		<b>A</b>	<b>B</b>	<b>C</b>	<b>L</b>	
<b>177-65-2</b>	65 mm	92 mm	47 mm	54 mm	90 mm	1940 g