



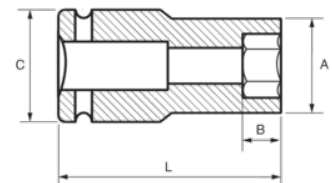
178-27-2

Impact Socket 1" Deep Hex 27 mm





PRODUCT DETAILS

- 1" impact sockets, long series
- High performance Cr-Mo alloy steel
- Phosphate finish
- To be used with machines
- To be used with retaining ring
- Dynamic-Drive profile to protect nuts
- Standards: UNE 16507, DIN 3129, ISO 2725



PRODUCT ATTRIBUTES

Product		A	B	C	L	
178-27-2	27 mm	46 mm	23 mm	54 mm	90 mm	1134 g