



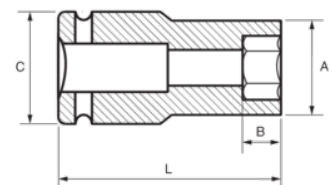
178-33-2

Impact Socket 1" Deep Hex 33 mm





PRODUCT DETAILS

- 1" impact sockets, long series
- High performance Cr-Mo alloy steel
- Phosphate finish
- To be used with machines
- To be used with retaining ring
- Dynamic-Drive profile to protect nuts
- Standards: UNE 16507, DIN 3129, ISO 2725



PRODUCT ATTRIBUTES

Product		A	B	C	L	
178-33-2	33 mm	54 mm	24 mm	54 mm	92 mm	1311 g