



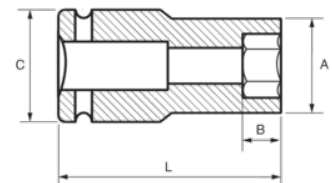
178-46-2

Impact Socket 1" Deep Hex 46 mm





PRODUCT DETAILS

- 1" impact sockets, long series
- High performance Cr-Mo alloy steel
- Phosphate finish
- To be used with machines
- To be used with retaining ring
- Dynamic-Drive profile to protect nuts
- Standards: UNE 16507, DIN 3129, ISO 2725



PRODUCT ATTRIBUTES

Product		A	B	C	L	
178-46-2	46 mm	68 mm	36 mm	54 mm	95 mm	1710 g