



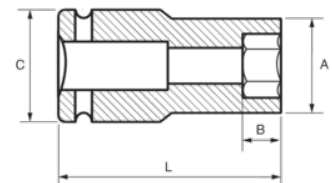
168-32-1

Impact Socket 1/2" Deep Hex 32 mm



## PRODUCT DETAILS

- 1/2" impact sockets, long series
- High performance Cr-Mo alloy steel
- Phosphate finish
- To be used with machines
- To be used with retaining ring
- Dynamic-Drive profile to protect nuts
- Standards: UNE 16507, DIN 3129, ISO 2725



PRODUCT ATTRIBUTES

Product		<b>A</b>	<b>B</b>	<b>C</b>	<b>L</b>	
<b>168-32-1</b>	32 mm	43 mm	40 mm	32 mm	78 mm	415 g