



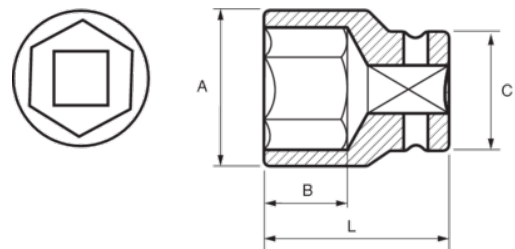
167-38-1

Impact Socket 1/2" Hex 38 mm





PRODUCT DETAILS

- 1/2" impact sockets
- High performance Cr-Mo alloy steel
- Phosphate finish
- To be used with machines
- To be used with retaining ring
- Dynamic-Drive profile to protect nuts
- Standards: UNE 16507, DIN 3129, ISO 2725



PRODUCT ATTRIBUTES

Product		A	B	C	L	
167-38-1	38 mm	50 mm	23 mm	40 mm	48 mm	480 g