



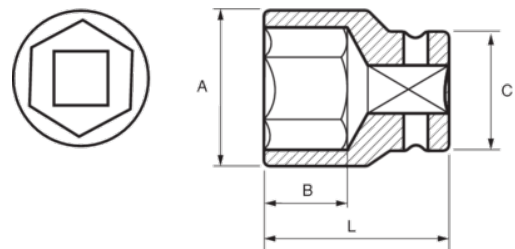
167-41-1

Impact Socket 1/2" Hex 41 mm




PRODUCT DETAILS

- 1/2" impact sockets
- High performance Cr-Mo alloy steel
- Phosphate finish
- To be used with machines
- To be used with retaining ring
- Dynamic-Drive profile to protect nuts
- Standards: UNE 16507, DIN 3129, ISO 2725



PRODUCT ATTRIBUTES

Product		A	B	C	L	
167-41-1	41 mm	56 mm	24 mm	45 mm	48 mm	495 g