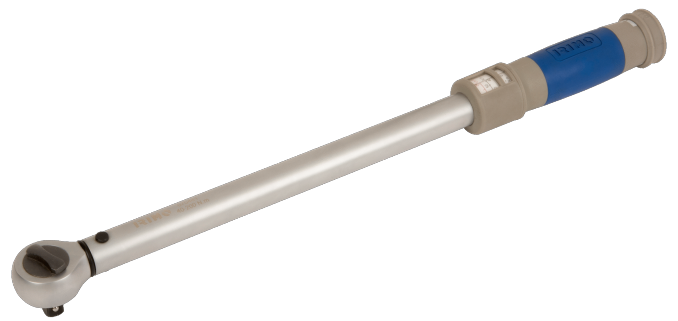




070411-070481


**Adjustable Click Torque Wrenches
with Fixed Ratchet Head**



PRODUCT DETAILS

- Precision: $\pm 4\%$ clockwise
- Fixed ratchet head
- Reversible ratchet with 45 teeth / 8° angle action
- Plastic handle for higher comfort
- Standard: ISO 6789:2003

PRODUCT ATTRIBUTES

Product					
070411	1/4"	275 mm	4-20 N·m	0.05 N·m	0.5 kg
070421	3/8"	360 mm	10-60 N·m	125 N·m	0.8 kg
070431	1/2"	420 mm	25-125 N·m	0.25 N·m	0.9 kg
070441	1/2"	460 mm	40-200 N·m	0.5 N·m	1.0 kg
070451	1/2"	520 mm	65-335 N·m	0.5 N·m	1.2 kg
070461	3/4"	520 mm	65-335 N·m	0.5 N·m	1.2 kg
070471	3/4"	1040 mm	160-800 N·m	2 N·m	4.9 kg
070481	1"	1250 mm	300-1500 N·m	3 N·m	8.2 kg