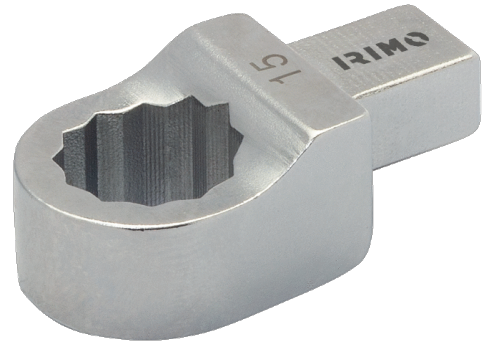


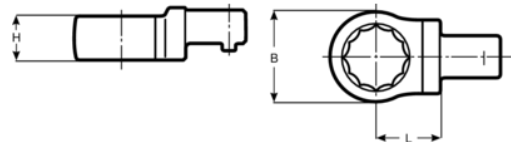


7309-2-10/7309-2-22  
Ring End Inserts 9x12





## PRODUCT DETAILS

- Ring-end insert head, 9x12 mm
- High performance alloy steel
- Forged chrome plated



PRODUCT ATTRIBUTES

| Product          |  | <b>L</b> | <b>H</b> | <b>B</b> |  |
|------------------|---|----------|----------|----------|---|
| <b>7309-2-10</b> | 10 mm   | 17.5 mm  | 8 mm     | 18 mm    | 40 g  |
| <b>7309-2-11</b> | 11 mm   | 17.5 mm  | 8 mm     | 19 mm    | 40 g  |
| <b>7309-2-12</b> | 12 mm   | 17.5 mm  | 12 mm    | 20 mm    | 50 g  |
| <b>7309-2-13</b> | 13 mm   | 17.5 mm  | 12 mm    | 21 mm    | 50 g  |
| <b>7309-2-14</b> | 14 mm   | 17.5 mm  | 12 mm    | 23 mm    | 50 g  |
| <b>7309-2-17</b> | 17 mm   | 175 mm   | 13 mm    | 27 mm    | 50 g  |
| <b>7309-2-19</b> | 19 mm   | 17.5 mm  | 13 mm    | 31 mm    | 60 g  |
| <b>7309-2-22</b> | 22 mm   | 17.5 mm  | 15 mm    | 35 mm    | 80 g  |