

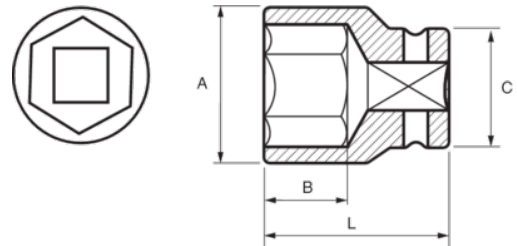


112-06-1/112-22-1
3/8" Sockets Hex Metric




PRODUCT DETAILS

- 3/8" sockets, hex, metric sizes
- Chrome vanadium alloy steel
- Chrome plated bright finish
- Wave shape profile NPP
- Standards: DIN 3120, DIN 3124



PRODUCT ATTRIBUTES

Product		A	B	C	L	
112-06-1	6 mm	10.5 mm	9 mm	17 mm	28 mm	21 g
112-07-1	7 mm	11 mm	9 mm	17 mm	28 mm	24 g
112-08-1	8 mm	12.2 mm	9 mm	17 mm	28 mm	27 g
112-09-1	9 mm	13.5 mm	9 mm	17 mm	28 mm	26 g
112-10-1	10 mm	14.7 mm	9 mm	17 mm	28 mm	24 g
112-11-1	11 mm	16 mm	9 mm	17 mm	28 mm	26 g
112-12-1	12 mm	18 mm	15 mm	17 mm	28 mm	24 g
112-13-1	13 mm	19 mm	15 mm	17 mm	28 mm	29 g
112-14-1	14 mm	20 mm	15 mm	17.7 mm	28 mm	38 g
112-15-1	15 mm	22 mm	15 mm	17.9 mm	28 mm	40 g
112-16-1	16 mm	22 mm	15 mm	17.9 mm	28 mm	46 g
112-17-1	17 mm	24 mm	15 mm	18.8 mm	30 mm	56 g
112-18-1	18 mm	26 mm	15 mm	19.8 mm	30 mm	75 g
112-19-1	19 mm	26 mm	15 mm	20.7 mm	30 mm	66 g
112-20-1	20 mm	28 mm	15 mm	21.8 mm	30 mm	88 g
112-21-1	21 mm	28 mm	15 mm	21.8 mm	30 mm	84 g
112-22-1	22 mm	30 mm	15 mm	22.8 mm	32 mm	104 g