

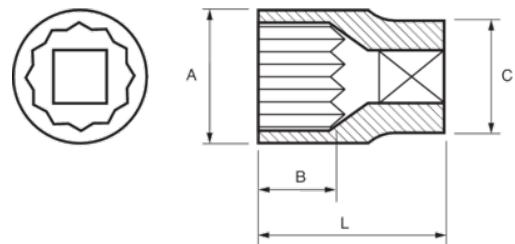


122A-10-1/122A-40-1  
Socket 1/2" Bi-hex





## PRODUCT DETAILS

- 1/2" sockets, bi-hex, inch sizes
- Chrome vanadium alloy steel
- Chrome plated bright finish
- Wave shape profile NPP
- Standards: DIN 3120, DIN 3124



PRODUCT ATTRIBUTES

Product		<b>A</b>	<b>B</b>	<b>C</b>	<b>L</b>	
<b>122A-10-1</b>	5/16 in	14.8 mm	13 mm	22 mm	38 mm	50 g
<b>122A-11-1</b>	11/32 in	15.3 mm	13 mm	22 mm	38 mm	48 g
<b>122A-12-1</b>	3/8 in	15.5 mm	13 mm	22 mm	38 mm	45 g
<b>122A-14-1</b>	7/16 in	16.7 mm	13 mm	22 mm	38 mm	49 g
<b>122A-16-1</b>	1/2 in	19.2 mm	13 mm	22 mm	38 mm	54 g
<b>122A-18-1</b>	9/16 in	20.5 mm	13 mm	22 mm	38 mm	55 g
<b>122A-20-1</b>	5/8 in	22 mm	17.8 mm	20.6 mm	38 mm	69 g
<b>122A-22-1</b>	11/16 in	24 mm	17.8 mm	21.9 mm	38 mm	71 g
<b>122A-24-1</b>	3/4 in	26 mm	17.8 mm	22.9 mm	38 mm	75 g
<b>122A-26-1</b>	13/16 in	28 mm	17.8 mm	23.9 mm	38 mm	76 g
<b>122A-28-1</b>	7/8 in	30 mm	17.8 mm	26.1 mm	38 mm	88 g
<b>122A-30-1</b>	15/16 in	32 mm	17.8 mm	28.1 mm	38 mm	104 g
<b>122A-34-1</b>	1.1/16 in	36 mm	17.8 mm	30.1 mm	42 mm	141 g
<b>122A-38-1</b>	1.3/16 in	40 mm	17.8 mm	34.1 mm	44 mm	214 g
<b>122A-40-1</b>	1.1/4 in	42 mm	17.8 mm	36.1 mm	44 mm	233 g