



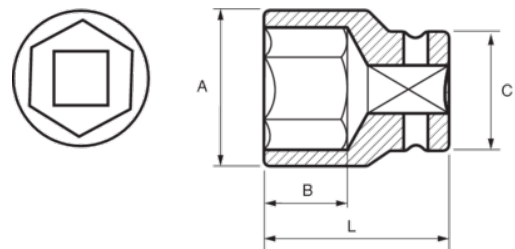
177-22-2/177-80-2

1" Impact Sockets Hex Metric





PRODUCT DETAILS

- 1" impact sockets
- High performance Cr-Mo alloy steel
- Phosphate finish
- To be used with machines
- To be used with retaining ring
- Dynamic-Drive profile to protect nuts
- Standards: UNE 16507, DIN 3129, ISO 2725



PRODUCT ATTRIBUTES

Product		A	B	C	L	
177-22-2	22 mm	39 mm	22 mm	54 mm	58 mm	645 g
177-24-2	24 mm	41 mm	22 mm	54 mm	58 mm	650 g
177-27-2	27 mm	46 mm	22 mm	54 mm	58 mm	670 g
177-30-2	30 mm	49 mm	24 mm	54 mm	62 mm	680 g
177-32-2	32 mm	52 mm	24 mm	54 mm	62 mm	695 g
177-33-2	33 mm	54 mm	24 mm	54 mm	62 mm	695 g
177-34-2	34 mm	54 mm	24 mm	54 mm	62 mm	720 g
177-36-2	36 mm	56 mm	29 mm	54 mm	65 mm	800 g
177-38-2	38 mm	58 mm	29 mm	54 mm	65 mm	845 g
177-41-2	41 mm	61 mm	34 mm	54 mm	70 mm	920 g
177-42-2	42 mm	64 mm	34 mm	54 mm	70 mm	950 g
177-46-2	46 mm	68 mm	36 mm	54 mm	75 mm	1150 g
177-50-2	50 mm	75 mm	36 mm	54 mm	83 mm	1375 g
177-55-2	55 mm	79 mm	44 mm	54 mm	83 mm	1540 g
177-60-2	60 mm	86 mm	47 mm	54 mm	87 mm	1700 g
177-65-2	65 mm	92 mm	47 mm	54 mm	90 mm	1940 g
177-70-2	70 mm	97 mm	47 mm	54 mm	93 mm	3540 g
177-75-2	75 mm	104 mm	47 mm	86 mm	95 mm	2900 g
177-80-2	80 mm	110 mm	39 mm	86 mm	100 mm	3300 g