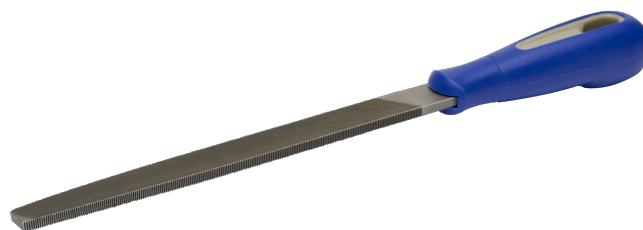




**534521-534551**

**Flat Files Bastard Cut Tapered Edges**

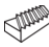
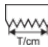
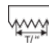



## PRODUCT DETAILS

- For working high-alloy tool steels
- Conical tip, parallel surfaces for better access in angles and corners
- Comfortable two-component handle for excellent grip
- Surfaces double cut, edges single cut
- Type of cut: 1 = bastard, 2 = double
- Packaged with a hanging clip



## PRODUCT ATTRIBUTES

Product	A	B	C				
<b>534521</b>	150 mm	16 mm	4 mm	1	12	30	110 g
<b>534531</b>	200 mm	20 mm	5 mm	1	10	25	180 g
<b>534541</b>	250 mm	25 mm	5.5 mm	1	9	23	270 g
<b>534551</b>	300 mm	30 mm	6 mm	1	7	18	430 g