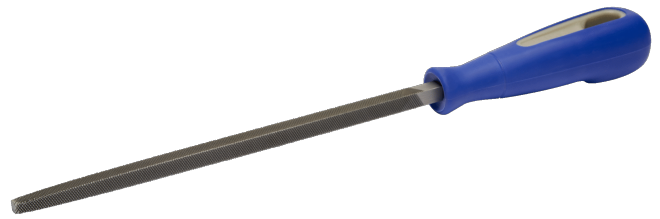




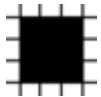
534931-534941

**Square Files Bastard Double Cut**

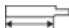

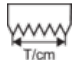
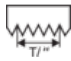


**PRODUCT DETAILS**

- For filing grooves, rectangular holes, inside corners and for fine-adjustment of cutting tools
- Comfortable two-component handle for excellent grip
- Surface tapered towards the tip
- Surface double cut
- Type of cut: 1 = bastard, 2 = double



**PRODUCT ATTRIBUTES**

Product		<b>B</b>		 T/cm	 T/cm	<b>g</b>
<b>534931</b>	150 mm	6 mm	1	12	30	79 g
<b>534941</b>	200 mm	8 mm	1	10	25	132 g